

Quick Start Guide, Rel. 3.1

IMPORTANT: If you have a MusicPad Pro™ Plus, leave the power off, plug in the AC adapter, and charge the batteries for at least 2 hours prior to use. Undercharging the batteries can result in permanent damage. Also, you should not leave your MusicPad Pro Plus unconnected to an AC adapter for more than 2 months as there is a slight drain on the batteries, even when not in use.

1 Install and Open the Software

What Do I Need?

- Computer and Operating System (OS)
 - IBM-compatible system with Pentium II or higher processor running Windows 98 SE, Windows ME, Windows 2000, or Windows XP (includes SP2)
 - Macintosh running Mac OS 9.2.1 or Mac OS X v10.2.6 or later (minimum), or Mac OS X v10.3.2 or later (recommended)
- 64 MB RAM (minimum)
- 50 MB available hard disk space
- XGA display with settings at 1024x768 pixels, 16-bit color
- CD-ROM drive
- Ethernet adapter (optional)
- Scanner (optional)
- One of the following cables:
 - USB cable (USB connection)
 - Crossover Ethernet cable (local connection)
 - Straight-through Ethernet cable (LAN connection)

How Do I Install the MusicPad Manager Software?

- If you are using a Windows OS:
 1. Insert the MusicPad CD-ROM into your CD-ROM drive. If the MusicPad Pro software installation begins within 30 seconds, go to Step 2. If the MusicPad Pro software installation does not begin:
 - Click **Start** from the computer taskbar, then choose **Run**.
 - In the **Run** dialog box, type `D:\autorun.exe` (where D is the drive letter of your CD-ROM drive). Click **OK**.
 2. Click the **Install MusicPad Pro Software** button.

- If you are using a Macintosh OS:
 1. Insert the MusicPad CD-ROM into your CD-ROM drive.
 2. Select the CD-ROM drive and double-click on the **Install** icon.
 3. Click the **Install MusicPad Pro Software** button.

How Do I Launch MusicPad Manager?

- If you are using Windows OS, double click the MusicPad Manager desktop icon.
- If you are using a Macintosh OS, open the “Applications” folder. Then open the subfolders “FreeHand Systems:MusicPad Manager”. Double-click on the “MusicPad Manager” application icon.

2 Start Your MusicPad Pro

How Do I Start My MusicPad Pro?

1. Attach the power cord to your MusicPad Pro and to a power source.
2. Press and release the grey button on the bottom-right side of the MusicPad Pro. The MusicPad Pro starts up in 2-5 seconds. Do not hold down the power button or press it more than once. Doing so turns the MusicPad Pro off.

How Do I Start My MusicPad Pro Plus?

1. Attach the power cord *or* charge the MusicPad Pro Plus with the supplied battery charging unit for 2 hours. Once charged, the MusicPad Pro Plus operates for 3½–4½ hours on a fully charged battery. See **Tips and Common Questions** for information about extending your battery charge.
2. Press and release the grey button on the bottom-right side of the MusicPad Pro. The MusicPad Pro starts up in 2-5 seconds.
3. Go to **Network Your MusicPad Pro**.

NOTE: Placing your MusicPad Pro in sleep mode extends the operating time approximately 8 hours. To place your MusicPad Pro in sleep mode, press and release the grey power button. The **Power Down** bar is displayed. Select **Sleep**. To toggle out of sleep mode, press and release the grey power button again.

3

Network MusicPad Pro: USB

How Do I Connect the MusicPad Pro to My Computer Using USB So I Can Transfer Files?

You can connect your MusicPad Pro using a USB cable (not applicable to Mac OS 9.2.1 platform).

NOTE: For information about using an Ethernet cable instead of a USB cable to network your MusicPad Pro, see *Quick Start Guide 3.0* section 4: **Network MusicPad Pro: Ethernet**. That document is available on our support page at: <http://www.freehandsystems.com/support.html>

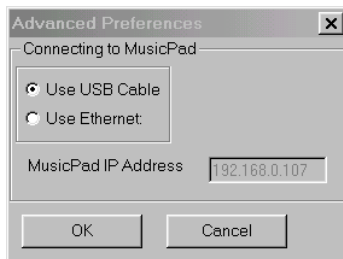
To connect your MusicPad Pro using a USB cable:

1. If your MusicPad Pro isn't already on, turn it on now.
2. Connect a USB cable to the USB2 port on the MusicPad, then connect it to the USB port on your computer.



Connect USB cable to USB2 port

3. Open the MusicPad Manager software. Select **Tools**→**MusicPad Manager Options**. Click **Advanced**. The Advanced Preferences window is displayed.
4. Select **USB Cable** and click **OK**. The Options Dialog box is displayed. Check **Use USB Cable**. Click **OK**.



5. If you are a Windows user, go to **Are MusicPad Manager and MusicPad Pro Communicating?**. If you are a Macintosh user, go to number 6.
6. Macintosh users must change system preferences:
 - Click on the **Apple** and select **System Preferences**.
 - Click on the **Network** icon. The Network window is displayed.
 - From the TCP/IP tab, select **Using DHCP** from the Configure drop-down menu.
 - Click on **Apply Now**. The IP address and subnet mask will refresh. The IP address field displays 192.168.142.1 and the subnet mask field displays 255.255.255.0.
 - Go to **Are MusicPad Manager and MusicPad Pro Communicating**.

Are MusicPad Manager and MusicPad Pro Communicating?

1. Open MusicPad Manager.
2. Go to the **Tools** (hammer) icon, then select **File Manager**.
 - If MusicPad Manager and MusicPad Pro are communicating, the File Manager window displays files in the upper and lower file panes. The upper file pane displays files located in MusicPad Manager. The lower file pane displays files located on MusicPad Pro.
3. You are connected! See **Tips and Common Questions** for more information about MusicPad Pro.

Q. How do I access the *User's Guide*?

A. If you are using Windows, select **Start**→**Programs**→**FreeHand Systems**→**MusicPad Pro**→**User's Guide**. If you are using a Macintosh, open the **User's Guide** from the same folder you open MusicPad Manager. You need Adobe® Acrobat® Reader to view the *User's Guide*.

Q. How do I calibrate my MusicPad Pro?

A. Your tablet has been calibrated by the manufacturer and may never need adjusting. However, if it seems that the point to which you place your stylus is a little off when displayed on the screen, you can easily recalibrate the tablet. Select the **Tools** (hammer) icon on the FreeHand toolbar with your stylus, then select **Calibrate Touch Screen**. Five cross-hair graphics are displayed. Using the stylus (not your finger), touch each of the cross-hairs in the center without dragging your hand or a shirt sleeve across the screen—doing so affects accurate calibration. If you are not satisfied with the recalibration result or the calibration result prevents you from activating the **Tools** icon, follow the instructions in the following answer.

Q. I recalibrated my MusicPad Pro, but my calibration is still not right. What should I do?

A. You can use a paper clip as a tool. Locate the small hole in the back of the MusicPad Pro. Insert the end of the paper clip into the hole and press down. Your MusicPad's screen will be displayed. This procedure initiates a recalibration of your screen.

Q. How can I conserve the battery charge on my MusicPad Pro Plus?

A. You can adjust the brightness setting on your MusicPad Pro Plus to reserve the battery charge. Select the **Tools** (hammer) icon, then select **Brightness Control**.

Setting brightness to:

- 100% provides approximately 3½ hours of battery charge.
- 50% provides approximately 4 hours of battery charge.
- 25% provides approximately 4½ hours of battery charge.

